

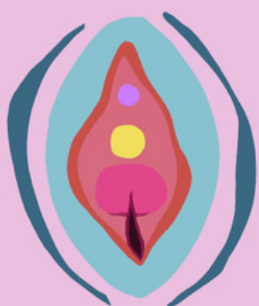
4

degrees OF PERINEAL TEAR

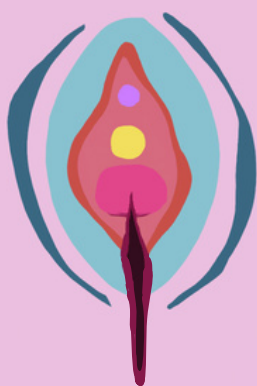
0



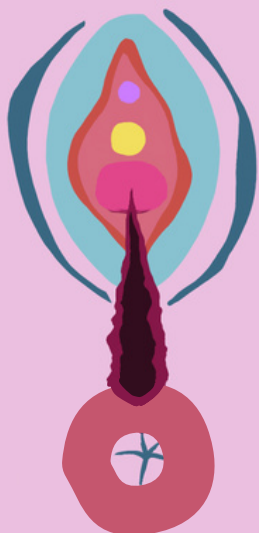
1



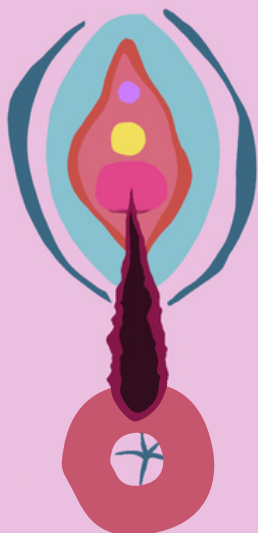
2



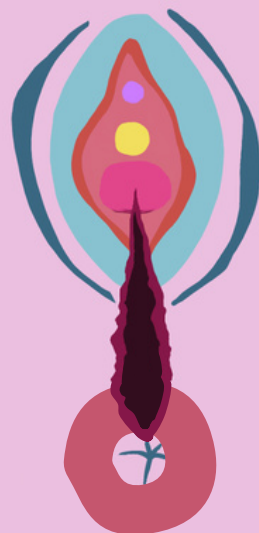
3A



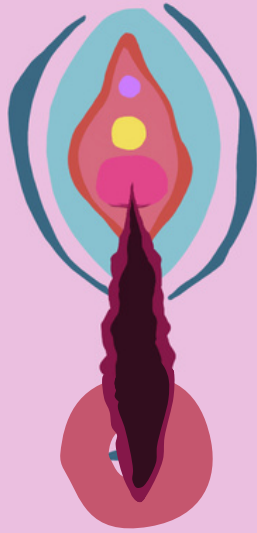
3B



3C



4



4 degrees OF PERINEAL TEAR

0

Tear no dey

1

E tear for surface

2

D tear fit bad reach any of dem pelvic floor muscle but e no reach EAS

3A

E tear reach PFM/EAS. <50% EAS follow tear

3B

E tear reach PFM/EAS. >50% EAS follow tear

3C

E Tear reach PFM/EAS/ IAS

4

D tear wey worse pass dey reach PFM/EAS/IAS and even come join d anorectal mucosa

More
info



EAS na external anal sphincter
IAS na internal anal sphincter
PFM na pelvic floor muscle

[*https://www.safetyandquality.gov.au/sites/default/files/2021-04/perineal_tears_ccs_v3.pdf](https://www.safetyandquality.gov.au/sites/default/files/2021-04/perineal_tears_ccs_v3.pdf)

